



**GOODSONNIA
HEART BEAT ECG**

GOODSOMNIA HEARTBEAT ECG

Goodsomnia HeartBeat ECG is an intelligent, chest-based health tracker with smart state-of-the-art ECG sensor to read your vital signs with ease. HeartBeat ECG together with Goodsomnia Lab app and Analytics platform allows you to track your cardiac health and chart data, anytime, anywhere.

Keeping track of your heart's health can give you valuable information about your overall fitness and also signal potential heart problems. With all-weather 12 hour continuous monitoring of your heart, everything you need to know fits in the palm of your hand.

FUNCTIONAL DESCRIPTION

- Real-time monitoring of multi-parameters with built-in body posture sensor;
- Ultra-lightweight/ thin and minimalistic;
- Comfortable fit for everyday use;
- Heath screening algorithm. Check your overall heart well-being score, Stamina levels, Adaptivity potential, Emotional state, Stress index, Heart rhythm disturbances, Heart rate, Heart bio-age, Risk of cardiac episodes, Heart muscle state.



The HeartBeat ECG collects reliable, accurate ECG and physical activity data in real-life situations, day and night.

The technology is highly suited to long-term ECG telemonitoring of people in their home environment. The unique combination of features provides a solid foundation for home health self-screening.

Once a request for a professional medical report is submitted by a user using Goodsomnia Lab app and Analytics platform, he or she will obtain a detailed waveform analysis and wellness parameters, as well as vital health indications.

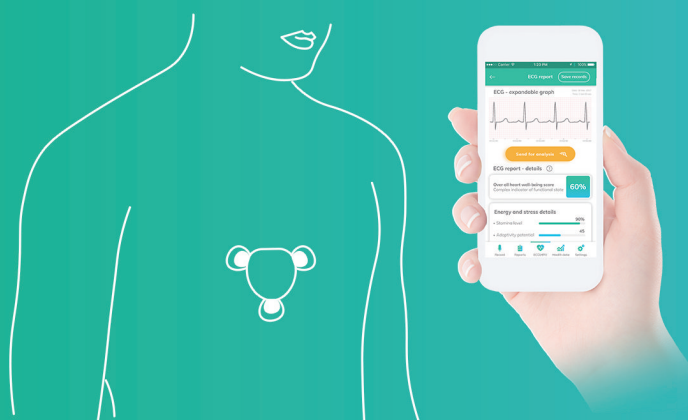
The blue light flashes when the device is connected, and the red light reminds when the device is on but disconnected. The automatic connection is simple and easy to operate.

TECHNICAL SPECIFICATION

| | |
|---|--|
| Size | 54 mm x 61 mm x 9 mm |
| Shell material | ABS + antibacterial plastics |
| Net weight | 20 gram |
| Battery capacity | ≥ 170mAh |
| Indicator light status | Flashing, Steady Internal |
| Power supply | DC 3.7V |
| Sample rate | 512Hz |
| Charging time | < 2 hour |
| Standby time | ≥ 60days |
| Continuous monitoring time | ≥ 12h |
| Charging voltage | DC 5.0V - 300mA |
| Operating Current | ≤ 20mA |
| Data transmission | Bluetooth BLE 4.0 |
| Channel number | Single channel |
| Application (APP) Software Software name | Goodsomnia Lab |
| Software version | 1.5 |
| APP software configuration requirements. Application system | Smartphone, Tablet, Desktop |
| Requirement. Smartphone with minimum | |
| Processor | Dual Core 1.0GHz and above |
| Capacity | 4G and above |
| Memory size | 1G and above |
| Display Screen | 1280*720 and above |
| Operation system | Android 5.0 and above, IOS 9.0 and above |
| Data transmission | BLE 4.0 |

USAGE INSTRUCTION

Before the test, relax for 5 minutes.



Bluetooth
connection



2 years
warranty



Home/Medical
use

